



KONICA MINOLTA

bizhub C227i

A3 Colour Multifunctional Printer (MFP)

bizhub i-SERIES

RETHINK IT



C227i

Colour 22 PPM
BW 22 PPM

Giving Shape to Ideas

TOMORROW'S WORKPLACE TODAY

A NEW WAY OF WORKING HAS ARRIVED

From an office hub to a partner that enhances your creativity.

As office documents become more digitised and data volumes increase, document management and access assume more importance than ever. Remote access and cloud integration also heighten the need for security.

Multifunctional Printers (MFP) are now expected to connect people, places and devices simply and safely and create a new way of working.

We want to provide a new-value office that can be used intuitively by digital natives. That intent gave rise to the 2nd generation bizhub, the bizhub i-Series.

MFPs have transitioned from an office hub to functioning as a partner that enhances your creativity, one that meets your diverse workstyles and business needs.

Why not embrace this smarter, simpler way of working?





“i” changes the office of the future from a customer perspective

From an executive’s perspective

Konica Minolta supports corporate governance through our services

From an IT manager’s perspective

Assures IT security and reduces managerial burden

From a user perspective

Prioritising the User Interface for simplicity and ease of use

**Delivering Simple, Secure and Convenient office work.
We innovate your business, processes and way of working.**



Simplifying work

The operation panel design has been updated to reflect familiar smart device operation. It offers the user a smarter way of working.

Thoroughly protecting office information

Improved security of large-volume office data, and paper documents, significantly reduces the burden on IT managers.

Always at the forefront

Konica Minolta’s remote services support governance and resolve executive concerns and issues.

i-SERIES SIMPLE SIMPLIFYING WORK

The User Interface has been completely revamped with an operation panel screen with smart-device-style operability. Operation has been simplified by narrowing down functions and screen transitions to frequently-used functions.



Easy-to-use, new operation panel design

The operation panel features a new simple GUI (Graphical User Interface) design. Features reflect familiar smart devices and enable easy use of a variety of IT services. Simplicity of operation has been achieved by concentrating on frequently-used functions to minimise functions and screen transitions.

Large, user-friendly, 7-inch touch panel

The 7-inch panel has been newly developed from the customer's perspective. It delivers better legibility and ease of operation for enhanced work efficiency. The multi-touch feature enables smooth, intuitive, tablet-like operation.



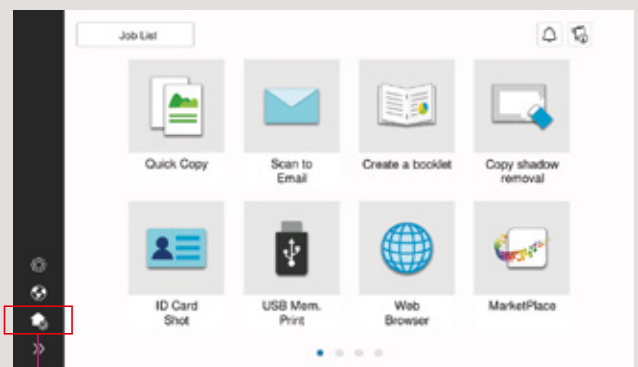
GUI operation panel with a choice of two panel styles

The user can switch between two panel styles as required: the new GUI Basic Style characterised by simple operation, and the conventional Classic Style utilising advanced settings and functions. Basic Style also offers an intuitive Simple Copy screen.

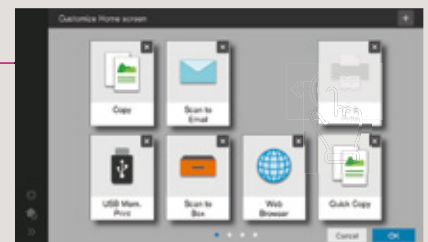
Home screen

The screen is divided into an Information Area and a Main Area which are customisable.

- Information Area: displays information such as settings menu buttons, ID button, and user name while logged in.
- Main Area: access to functions such as copying, faxing and scanning.



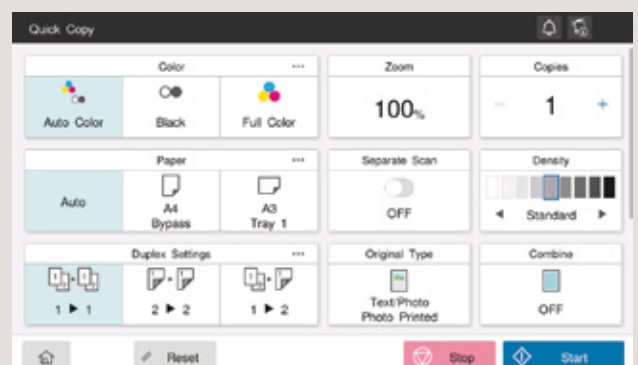
To Editing screen



Quick Copy screen

The Quick Copy screen easily executes the intended task with minimal screen transitions

- Large buttons allow easy browsing and intuitive operation.
- Options are displayed in a list and can be changed with just one touch.

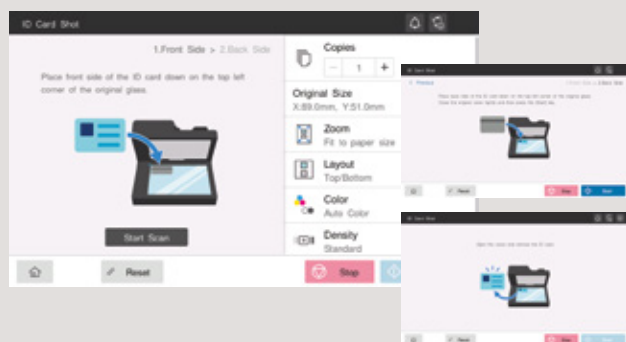


Make tasks simple with purpose-specific apps

The bizhub C227i simplifies operation with on-screen animated instructions that guide users through tasks. Operations can be performed smoothly in just a few easy steps.

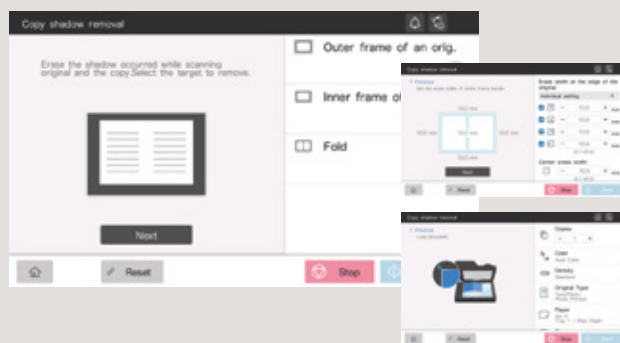
Card shot for ID card copying

Both front and back sides of an ID card can be copied on one sheet of paper in just a few easy steps.



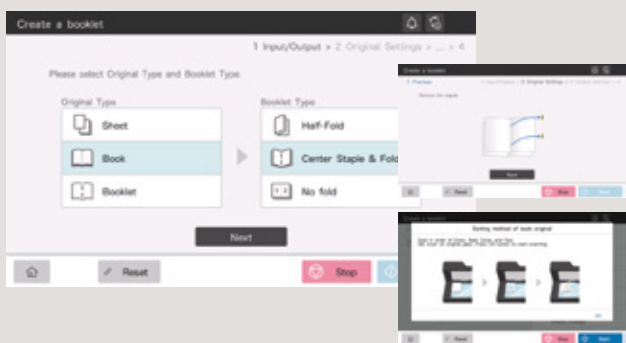
Non-image area erase function

For users who want to copy with the document cover open, and/or want to omit the shadowy areas around the scanned images of objects such as books.



Booklet making

For users who want to create booklets such as magazines.



**i-SERIES
SIMPLE**

THOROUGH PROTECTION OF OFFICE INFORMATION



Data security is an ongoing concern in the corporate world. Konica Minolta works tirelessly to keep clients' documents secure, in both digital and paper formats. By including cutting edge security functions in all Konica Minolta technologies, we aim to reduce the burden on IT administrators.

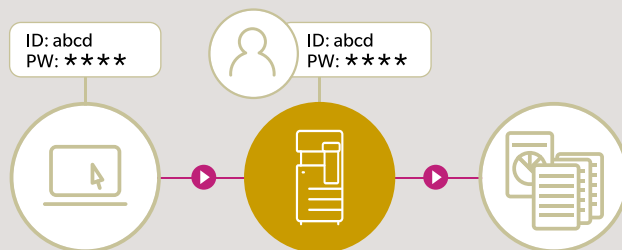


bizhub SECURE services

Data protection is a major issue for most companies. bizhub delivers advanced security settings through bizhub SECURE services, a total security setting service that provides greater protection for customer data stored in the SSD.

Secure printing

By setting a password for documents on the printer driver screen, the document is stored on the MFP's SSD until the correct password is input on the operation panel. The document is protected without being output until the password set for that document is matched. This is useful when you wish to print confidential documents or give permission for limited users to receive copies.



Use PC login user names for easy secure printing

The PC login profile can be used as an ID for secure printing, so the user can print easily and securely once logged in without the trouble of entering his or her ID each time.

Encrypted SSD

The bizhub C227i is equipped with a new 256 GB encrypted SSD for heightened security. With very few device compatibility problems, and with full-time encryption, this constantly maintains a high level of security with no fuss.

Various types of user authentication

Optimal authentication systems can be customised to suit office scale and pre-existing systems. The bizhub C227i also supports single sign-on (SSO) which enhances operability without sacrificing security.

Main unit authentication

Authentication can be performed through the bizhub alone. It is also possible to set detailed usage restrictions for functions, including copy, print, scan and fax*.

*Requires Fax Kit FK-513 option.

Non-contact IC card authentication

Non-contact IC cards^{*1} such as FeliCa can be used to authenticate users^{*2}. This also supports SSFC (Shared Security Formats Cooperation) specifications which enable integration of staff authentication with authentication systems. Apart from non-contact IC cards, authentication can also be carried out on NFC-compatible Android devices^{*3}.

*1 Non-contact IC cards are compatible with FeliCa (IDm), SSFC, FCF, FCF (Campus) and MIFARE (UID).

*2 Requires optional IC card authentication device and USB interface EK608 / EK-609.

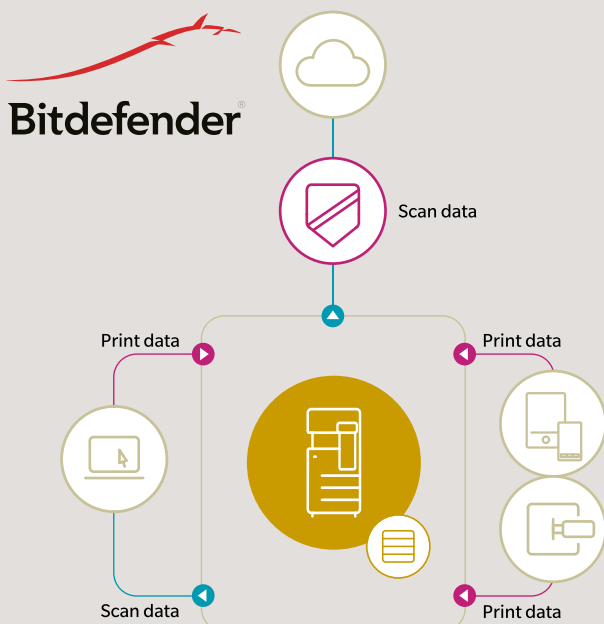
*3 Requires an Android device later than Android 4.4, compatible with HCE (Post Card Emulation), and Konica Minolta Mobile Print.

Virus scanning

The bizhub C227i can be equipped with robust antivirus software based on an embedded Bitdefender scan engine to ensure safe connection to devices including PCs, tablets, and USB flash drives. Scanning individual files means much finer virus detection than with the whitelist method alone. Latent viruses in the office are discovered through checking and notification when files are input. Checking when files are output from the MFP also prevents dissemination of infected files. Further periodic checking of files in the MFP discovers risky files and detects latent risks in the MFP. Real time virus scan jobs are available for print, scan and fax functions, while manual or scheduled virus scans are possible for folders such as SMB folders on the Box and SSD.

Requires i-Option LK-116.

Requires an internet environment.



Encrypted PDFs

• Password encryption

Documents distributed in PDF format can be password encrypted.

• Digital ID encryption

Only authorised recipients with a private key can decrypt. This ensures a far more robust level of security than the previous public key system.

If encrypting with Digital ID, the email address (S/MIME send) to which the Digital ID has already been registered must be registered to the MFP's abbreviated address.

• Electronic signatures

Electronic signatures certify (MFP) document authors, and also guarantee that the document has not been changed and is valid. Certifications by third party organisations can also be used.

When using electronic signatures, files should be encrypted using either a password or Digital ID.

Recognised high-level security ISO/IEC 15408 certification

To objectively prove the reliability of Konica Minolta MFP security functions, we plan to apply for the Common Criteria (CC) for Information Technology Security Evaluation (ISO/IEC 15408).

The bizhub C227i will also obtain CC certification for compliance with HCD-PP v1.0 (Protection Profile for Hardcopy Devices).

Information security-related certification obtained for this product (and this system) demonstrates compliance with certification requirements as a result of evaluations based on specified evaluation standards and methods, but does not assure that the product (or the system) is completely without weaknesses.

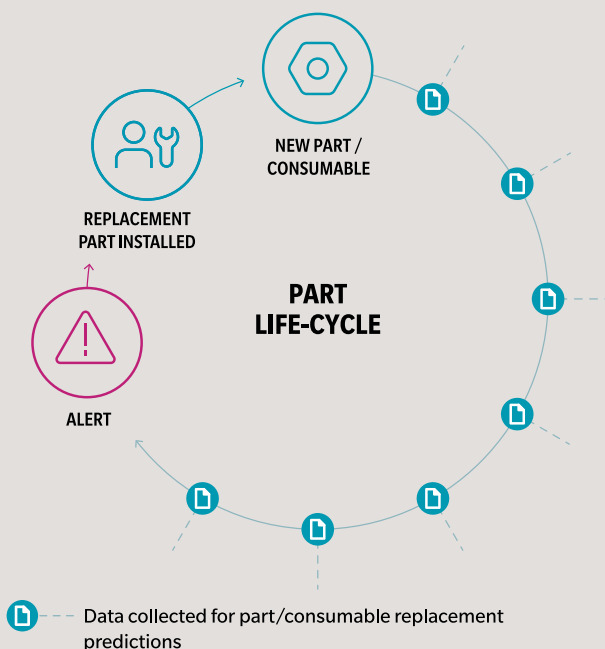
i-SERIES SIMPLE ALWAYS AT THE FOREFRONT

Konica Minolta remotely manages bizhub operating conditions and toner levels, and delivers a variety of support services.



Worldwide Remote Service Platform

We developed new services leveraging IoT so users can focus on their core business. i-Series intelligently collects data for self-diagnostic and remote maintenance, as well as predicts the optimum replacement time for parts and consumables to minimise downtime.



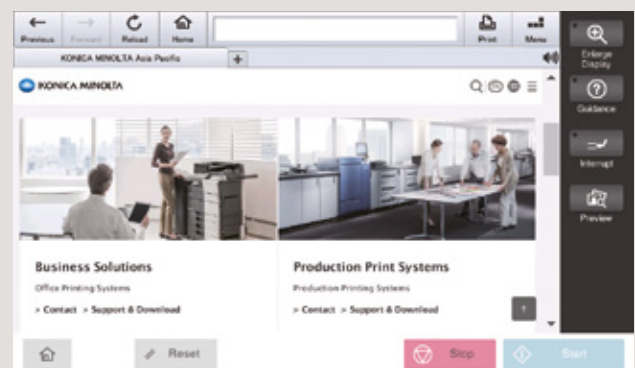
For more information, please contact your authorised Konica Minolta Representative.

Animated guide

The animated guide demonstrates procedures such as handling paper jams and replenishing consumables. Following the instructions displayed on the operation panel ensures smooth operation.

Web browser function

The bizhub C227i supports a web browser function. Websites can be displayed on the operation panel and printed out. Pages in PDF files on the website can be specified and only the required sections printed.



High-performance quad-core CPU

A high performance Quad Core CPU improves overall system performance meaning efficient parallel processing of applications, and seamless operation of cloud applications even during basic processing functions such as copying and printing.

HIGH PRODUCTIVITY

Reduce downtime and boost productivity with a range of paper feed options.

Shorter warm-up time

The warm-up time, from powering up to copying, is under 20 seconds. First Copy Out Time, from when the copy button is pressed until the first copy prints, is 8.4 seconds or less. Panel reset time has also been significantly reduced to about 1.5 seconds.

A wide range of paper feed options

Paper feed capacity for the standard main unit tray and multi manual feed is 1,100 sheets. Installing optional paper feed cabinets enables a maximum of 3,600 sheets*. Reducing paper tray refill frequency cuts downtime.

With optional paper feed cabinets installed.

Manual stapling supported finisher

The manual stapling function in the finisher lets the user quickly re-staple an original document that had its staple removed for copying, or when he or she forgets to choose a staple setting when printing.

Optional finisher FS-539 or FS-539SD is required.



Multifunctional finisher

Depending on the objective, users can select from several types of finishing that are automatically processed by the multifunctional finisher, including booklet making, tri-folding, stapling and hole-punching. In addition to high-speed output, this function allows in-house production of a variety of outputs and finishes.

Finishing Functionalities

Finisher Models		FS-539 *1, 2	FS-539SD *1, 2	FS-533	JS-506
Offset sorting (Shift sort) function	Slightly offsets position of each set of pages when discharged	✓	✓	✓	✓
Stapling functions	Corner stapling	Thin/normal (60-90 gsm): max. 50 sheets Thick (91-120 gsm): max. 30 sheets Thick (121-209 gsm): max. 15 sheets	Thin/normal (60-90 gsm): max. 50 sheets Thick (91-120 gsm): max. 30 sheets Thick (121-209 gsm): max. 15 sheets	Thin/normal (60-90 gsm) A4, B5: max 50 sheets ^{*4} A3, B5: max 30 sheets ^{*4}	—
	Corner stapling (parallel) ^{*3}				
Booklet function & folding functions	Saddle stitching	—	Max. 20 sheets	—	—
	Centre-fold				
Hole-punching	Tri-fold (up to 3 sheets)	Punch kit PK-524 Up to 256 gsm	Punch kit PK-519 Up to 157 gsm	—	—
	Two-hole punch				
Cover sheet & Insert sheet	Upper two-hole punch	Standard functions	Standard functions	Standard functions	Standard functions
	Cover sheet				
	Insert sheet				

*1 Installation of a finisher enables in-body paper discharge. A maximum of three discharge locations can be set. *2 Requires Relay Unit RU-514.

*3 FS-539/FS-539SD parallel stapling is only supported for A4 portrait, B5 portrait and A5 landscape orientations. *4 FS-533 corner stapling is only parallel.

Main unit standard
1,100 sheets

Max.
3,600 sheets
(PC-418 required)



Multi manual feed (Standard)
Max. A3
100 sheets (80 gsm paper)

Universal tray (Standard)
Max. A3
500 sheets (80 gsm paper)

Universal tray (Standard)
Max. A3
500 sheets (80 gsm paper)

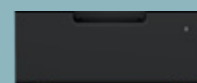
Options

Max.
2,100 sheets

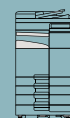
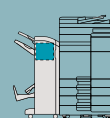


PC-218 (Option)
Max. A3
500 sheets x2 (80 gsm paper)

Max.
3,600 sheets



PC-418 (Option)
Max. A4
2,500 sheets (80 gsm paper)



COPY / PRINT

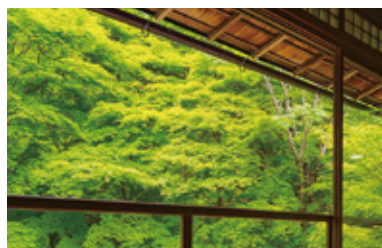
Equipped with advanced functions for colour MFPs.
Both Copy and Print functions exhibit outstanding performance.

Adoption of colour matching, corresponding to “memory colour”

Printer driver colour settings have been revised to perform colour matching corresponding to default “memory colour settings”. “Memory colour settings” refer to colours that most people recall as being brighter and more saturated than reality.



Conventional method



bizhub C227i series

Lightweight paper trays

Paper trays handle easily and open/close smoothly with a light press and pull motion. Trays can be removed for retrieval of jammed paper, which equates to less downtime.

Paper Size Measurement function

This function automatically measures irregular-sized paper placed on the platen glass. The size of the measured paper can also be registered in the bizhub’s memory. This is useful for offices that handle irregular paper sizes like slips and vouchers.

Print banners up to 1,200 mm with banner printing

Bypass tray supports feeding of banner paper, enables banner printing up to 1,200 mm. POPs and banners for a wide range of purposes can be created in a variety of sizes.

Print directly from your USB flash drive

The bizhub C227i series is equipped with a USB port, located on the side of the operation panel. After inserting a USB flash drive, printing procedures pop up in the touch screen, and the flash drive data can be directly printed or saved to a Box in the unit in a few easy steps.

May not operate correctly depending on the type of USB flash drive.
Supported file formats: PDF, compact PDF, JPEG, TIFF, XPS, compact XPS, and OOXML (.docx/.xlsx/.pptx).
Printing results may differ from the image on the PC screen.
Virus check function requires i-Option LK-116.

Email RX Print

Files can be easily printed out by attaching them to an email and sending it to the machine’s email address.

Supported file formats: PDF, Compact PDF, JPEG, TIFF, XPS, Compact XPS, and OOXML (.docx/.xlsx/.pptx).
Requires i-Option LK-110 v2.



SCAN

The Scan functions deliver high performance and high functionality

Outstanding scan performance

Automatic duplex scanning with the Automatic Document Feeder (ADF), achieves high-speed scanning of 55 ppm (20 double-sided sheets per minute). Up to 130 sheets* can be loaded at any one time, significantly reducing scanning time and effort. The precision of automatic skew correction, which adjusts the angle of the scanned original, has been greatly improved to deliver highly accurate scanning with less skew.

*80 gsm paper.



Send scan data instantly to your own email address with "Scan (email to me)"

Users can send scan data such as receipts and payment slips to themselves immediately. This can also be done securely with the authentication setting. As the "Scan (email to me)" button is on the home screen, the data can be scanned and sent quickly in a few easy steps.

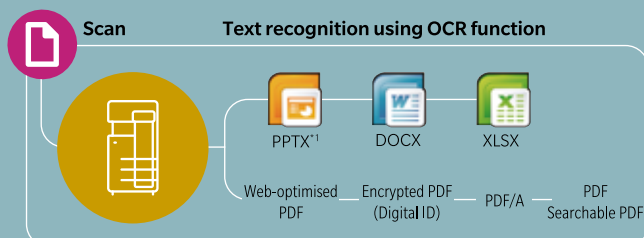
Exclude blank documents from being scanned with blank original removal function

Blank sheets from original documents set on the ADF can be excluded from scanning. Documents detected as blank sheets will not be counted as a page.

Digitisation of paper documents

Documents can be scanned and converted to PDF or OOXML format files. The file format can be selected according to the business and intended use, which broadens the scope of secondary use.

Scan to PDF / Scan to OOXML image (with LK-110 v2 installed)



- Applying OCR to a document produces searchable text
- Microsoft Office etc. enables reuse of images and text.

File conversion formats and required options (i-Option)

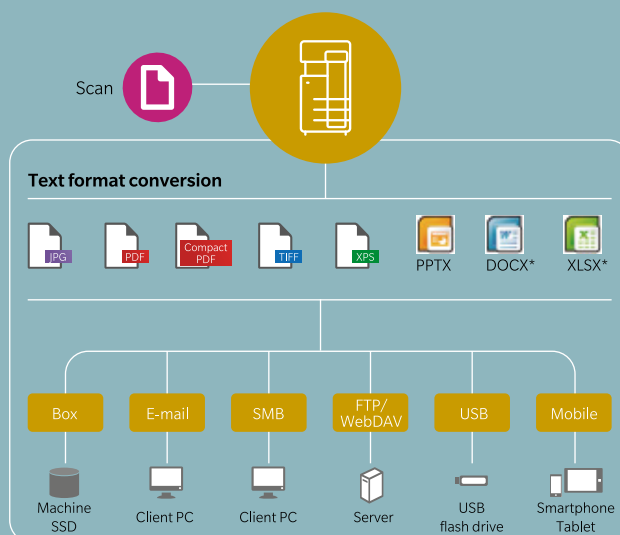
	LK-105 v4	LK-110 v2
PDF/A (long-term archiving)		✓
Web-optimised PDF (linearised PDF)		✓
Encrypted PDF (digital ID)		✓
Searchable PDF (OCR)	✓	✓
OOXML file		✓*1
(extension: docx/.xlsx/.pptx) conversion		
OOXML file	✓*2	✓
(extension: docx/.xlsx/.pptx) conversion + OCR		

*1 pptx conversion is a standard function, but the OCR function requires either LK-105 v4 or LK-110 v2.

*2 Only compatible with pptx.

Improve scan job efficiency

Scanned originals can be converted to a variety of document formats according to the application and stored in the bizhub's Box or a USB flash drive. They can also be sent and stored to a PC or server via email, SMB, FTP, or Web DAV.



Requires i-Option LK-110 v2.

Other main scan and fax* functions

*Requires optional FK-513.

- Super G3 Standard achieves high speed sending of approx. 2 seconds
- Direct Fax, paperless sending from a PC
- Convert received data into a Searchable PDF format
Requires i-Option LK-110 v2.
- IP Address Fax reduces transmission costs
- Address Storage for a maximum of 2000 addresses and 100 groups
- Skip Blank Pages function skips blank originals during scanning
- Banner Scan scans long originals from the ADF

MOBILE

Offers a new workstyle through advanced connectivity with mobile devices.

Mobile communications function

Connectivity with NFC-equipped Android devices

The operation panel has a mobile touch area compatible with NFC-equipped devices. Installing Konica Minolta Mobile Print on Android devices allows that device to be registered to the bizhub. Just holding the Android device over the mobile touch area enables the selected file to be printed. Scanned documents in the bizhub can also be scanned and saved to Android devices or cloud storage. Where user authentication is enabled, just holding the Android device nearby allows log in.

Requires the Android device to be equipped with OS4.4 or later.
Requires a wireless LAN environment.

Bluetooth LE connectivity with iOS devices

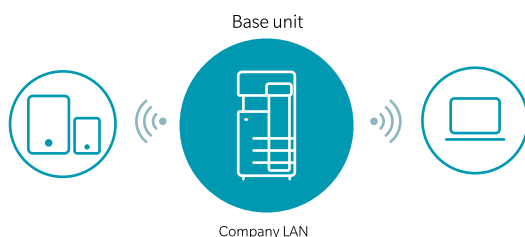
Using Bluetooth LE (low energy), a bizhub close to the user can be searched and registered with Konica Minolta Mobile Print. As it is also supported with the iOS action button, printing and scan data sharing from various applications can be smoothly executed. Further, where user authentication is enabled, Bluetooth LE can be used to log in.

Requires the device connection I/F kit EK-609 option.
Requires wireless LAN environment.

Wireless LAN (AP Mode)

The bizhub C227i supports Simple AP Mode*, which easily creates a local wireless LAN environment with only the bizhub allowing a wireless LAN to be built separately from the company LAN. Because it bypasses the company LAN, even mobile devices brought in from outside can be securely connected.

*Requires Upgrade Kit UK-221 option.



Supporting a range of print services



Konica Minolta Mobile Print

This is a mobile application offered by Konica Minolta. Connecting a mobile device with bizhub allows fast, secure scan data acquisition, saving to and sharing cloud storage, as well as document and image printing. Authentication Print and Secure Print are also supported enabling worry-free printing of confidential documents.



AirPrint

Apple's standard printing system which is supported from IOS4.2 and Mac OS X 10.7. Supported printers can be used via wireless LAN without installing applications on devices.



Mopria Print Service

Wireless technology offered by Mopria Alliance allows printing from devices equipped with Android 4.4 or later version.

ECO FRIENDLY

A range of environmental considerations, from outer case materials to power consumption.

0.5W sleep mode power consumption

Power saving logic has been improved, including turning off the CPU during sleep mode, to reduce sleep mode power consumption to 0.5W. In addition to helping reduce environmental impact, this is also effective in reducing TCO (Total Cost of Ownership).

Wide-ranging environmental compatibility. Compliant with various environmental standards

To address environmental issues such as global warming, our products are compatible with global environmental standards, including the Blue Angel Label.



bizhub C227i

OPTION DESCRIPTIONS

ENHANCED FEATURES

LK-105v4 OCR text recognition	Searchable PDF and PPTX
LK-106 Barcode fonts	Supports native barcode printing
LK-107 Unicode fonts	Supports native Unicode printing
LK-108 OCR A and B fonts	Supports native OCR A and B font printing
LK-110v2 Document converter pack	Generates various file formats incl. DOCX, XLSX and PDF/A
LK-111 ThinPrint® client	Print data compression for reduced network impact
LK-115v2 Trusted Platform Module	Trusted Platform Module for protection of data encryption and decryption
LK-116 Antivirus	Bitdefender® antivirus provides real time scanning of all incoming and outgoing data
LK-117 FOIP activation	Fax over IP networks (T.38), requires fax kit (Available post-launch)

CONNECTIVITY

EK-608 USB I/F kit	USB keyboard connection
EK-609 USB I/F kit	USB keyboard connection; Bluetooth
UK-221 Wireless LAN	Wireless LAN and wireless LAN Access Point Mode
FK-513 Fax board	Super G3 fax, digital fax functionality
MK-735 Mount kit	Installation kit for ID card reader

OTHERS

WT-515 Working table	Working table for upright panel
KP-101 10-Key pad	For use instead of touchscreen

MEDIA INPUT

PC-218 Universal tray	2x 500 sheets, A5-A3, 60-256 g/m ²
PC-418 Large capacity tray	2,500 sheets, A4, 60-256 g/m ²
DK-518 Copier desk	Provides storage space for print media and other materials

MEDIA OUTPUT

FS-533 Inner finisher	50-sheet stapling, 500 sheets max. output
FS-539 Staple finisher	50 sheets stapling; 3,200 sheets max. output
FS-539SD Booklet finisher	50 sheets stapling; 20 sheets booklet finisher; 2,200 sheets max. output
MK-602 Attachment kit	For FS-533 installation
MK-603 Attachment kit	For FS-533, FS-539/SD, JS-506 installation
PK-524 Punch kit for FS-539/SD	2/4 hole punching; autoswitching
JS-506 Job separator	Separation of fax output; etc.
PK-519 Punch kit for FS-533	2/4 hole punching, autoswitching
RU-514 Relay unit	For FS-539/SD installation

TECHNICAL SPECIFICATIONS

SYSTEM SPECIFICATIONS

System speed A4	Up to 22/22 ppm (mono/colour)
System speed A3	Up to 12/12 ppm (mono/colour)
Autoduplex speed A4	Up to 22/22 ppm (mono/colour)
1st page out time A4	6.8/8.4 sec. (mono/colour) ¹
Warm-up time	Approx. 20 sec. (mono/colour) ¹
Imaging technology	Laser
Panel size/resolution	7" / 800 x 480
System memory	6 GB (standard/max)
System hard drive	256 GB SSD
Interface	10/100/1,000-Base-T Ethernet; USB 2.0; Wi-Fi 802.11 b/g/n/ac (optional)
Network protocols	TCP/IP (IPv4 / IPv6); SMB; LPD; IPP; SNMP; HTTP(S); Bonjour
Automatic document feeder	Up to 130 originals; A5-A3; 35-128 g/m ² ; RADF
Printable paper size	A6-A3; banner paper max. 1,200 x 297 mm
Printable paper weight	60-256 g/m ²
Paper input capacity	1,100/3,600 sheets (standard/max)
Paper tray input (standard)	1x 500; A5-A3; custom sizes; 60-256 g/m ² 1x 500; A5-A3; custom sizes; 60-256 g/m ²
Paper tray input (optional)	2x 500 sheets; A5-A3; custom sizes; 60-256 g/m ² OR 1x 2,500 sheets; A4; custom sizes; 60-256 g/m ²
Manual bypass	100 sheets; A6-A3; custom sizes, banner; 60-256 g/m ²
Finishing modes (optional)	Offset; Group; Sort; Staple; Staple (offline); Punch; Half-fold; Letter-fold; Booklet
Automatic duplexing	A5-A3; 60-256 g/m ²
Output capacity	Up to 250 sheets / up to 3,300 sheets (standard/max)
Stapling (optional)	Max. 50 sheets or 48 sheets + 2 cover sheets (up to 209 g/m ²)
Stapling output capacity	Max. 100 sets

SYSTEM SPECIFICATIONS

Letter fold	Max. 3 sheets
Letter fold capacity	Max. 30 sets; unlimited (without tray)
Booklet	Max. 20 sheets or 19 sheets + 1 cover sheet (up to 209 g/m ²)
Booklet output capacity	Max. 20 booklets; unlimited (without tray)
Power consumption	220-240 V / 50/60 Hz; Less than 1.50 kW
System dimension (W x D x H)	571 x 661 x 914 mm (includes ADF)
System weight	Approx. 76.0 kg (includes ADF)

PRINTER SPECIFICATIONS

Print resolution	1,800 (equivalent) x 600 dpi
Page description language	PCL 6 (XL3.0); PCL 5c; PostScript 3 (CPSI 3016); XPS
Operating systems	Windows 7 (32/64); Windows 8.1 (32/64); Windows 10 (32/64); Windows Server 2008 (32/64); Windows Server 2008 R2; Windows Server 2012; Windows Server 2012 R2; Windows Server 2016; Windows Server 2019; Macintosh OS X 10.10 or later; Linux
Printer fonts	80 PCL Latin; 137 PostScript 3 Emulation Latin
Mobile printing	AirPrint (iOS); Mopria (Android); Konica Minolta Print Service (Android); Konica Minolta Mobile Print (iOS/Android) optional: Wi-Fi Direct

SCANNER SPECIFICATIONS

Scan speed (mono/colour) (with DF-633)	Up to 55 / 55 ipm in simplex (300 dpi) Up to 20 / 20 ipm in duplex (300 dpi)
Scan modes	Scan-to-eMail (Scan-to-Me); Scan-to-SMB (Scan-to-Home); Scan-to-FTP; Scan-to-Box; Scan-to-USB; Scan-to-WebDAV; Scan-to-DPWS; Scan-to-URL; TWAIN scan
File formats	JPEG; TIFF; PDF; Compact PDF; Encrypted PDF; XPS; Compact XPS; PPTX; PDF/A; PDF/A 1a and 1b optional: Searchable PDF; Searchable DOCX/PPTX/XLSX
Scan destinations	2,000 destinations + 100 groups; LDAP support

COPIER SPECIFICATIONS

Copy resolution	600 x 600 dpi
Gradation	256 gradations
Multicopy	1-9,999
Original format	Max. A3
Magnification	25-400% in 0.1% steps; Auto-zooming

FAX SPECIFICATIONS

Fax standard	Super G3 (optional)
Fax transmission	Analogue; i-Fax; Colour i-Fax; IP-Fax
Fax resolution	Up to 600 x 600 dpi
Fax compression	MH; MR; MMR; JBIG
Fax modem	Up to 33.6 Kbps
Fax destinations	2,000 single + 100 groups

USER BOX SPECIFICATIONS

Storable documents	Up to 3,000 documents or 10,000 pages
Type of user boxes	Public; Personal (with password or authentication); Group (with authentication)
Type of system boxes	Secure print; Encrypted PDF print; Fax receipt; Fax polling

SYSTEM FEATURES

Software	Net Care Device Manager; Data Administrator; Box Operator; Web Connection; Print Status Notifier; Driver Packaging Utility; Log Management Utility
Security Functions	ISO 15408 HCD-PP Common Criteria (in evaluation); IP filtering and port blocking; SSL3 and TLS1.0/1.1/1.2 network communication; IPsec support; IEEE 802.1x support; User authentication; Authentication log; Secure print; Kerberos; Storage encryption (AES 256); Confidential fax; Print user data encryption optional: Antivirus realtime scanning (Bitdefender®)
Accounting	Up to 1,000 user accounts; Active Directory support (user name + password + e-mail + smb folder); User function access definition; Authentication by mobile device (Android) optional: ID card authentication (ID card reader); Authentication by mobile device (iOS)

¹ Warm-up time may vary depending on the operating environment and usage

² If the maximum volume is reached within a period of one year, then a maintenance cycle must be performed

- All specifications refer to A4-size paper of 80 g/m² quality.
- The support and availability of the listed specifications and functionalities varies depending on operating systems, applications and network protocols as well as network and system configurations.
- The stated life expectancy of each consumable is based on specific operating conditions such as page coverage for a particular page size (5% coverage of A4). The actual life of each consumable will vary depending on use and other printing variables including page coverage, page size, media type, continuous or intermittent printing, ambient temperature and humidity.
- Some of the product illustrations contain optional accessories.
- Specifications and accessories are based on the information available at the time of printing and are subject to change without notice.
- Konica Minolta does not warrant that any specifications mentioned will be error-free.
- All brand and product names may be registered trademarks or trademarks of their respective holders and are hereby acknowledged.



KONICA MINOLTA

NEW SOUTH WALES

Konica Minolta House
4 Drake Avenue
Macquarie Park NSW 2113
(02) 8026 2222

SOUTH AUSTRALIA

L1 84 Greenhill Road
Wayville SA 5034
(08) 8231 2911

ACT

1/55 Wentworth Avenue
Kingston ACT 2604
(02) 6206 6500

VICTORIA

Level 5, 441 St Kilda Road
Melbourne VIC 3004
(03) 8699 0777

QUEENSLAND

Level 9, 100 Skyring Terrace
Newstead QLD 4006
(07) 3872 9100

WESTERN AUSTRALIA

66 Kings Park Road
West Perth WA 6005
08 6380 3700

Konica Minolta
Business Solutions Australia Pty Ltd
Free Call 1800 789 389
konicaminolta.com.au/home

